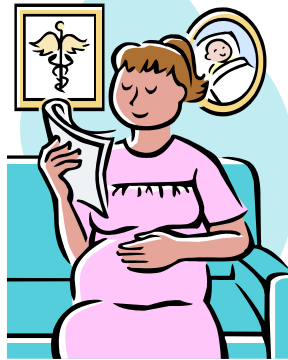


Congratulations!



You're having a baby!

When your baby is born there are two simple ways to get your baby health coverage if you had Medi-Cal for your baby's birth

CALL YOUR WORKER

**OR NEWBORN REFERRAL FORM
(MC 330)**

You can call your Medi-Cal worker to add the baby to the case. If you do not know who your worker is you can call (877) 481-1044 to find out.

Note: You do not need a birth certificate or Social Security card to add your baby to your case.

There is a simple form that you can fill out before you leave the hospital. It can be faxed over to a central Medi-Cal office and your baby's card should be mailed in about 10 days. Ask for help to fill out the form and fax it to (213) 763-8666.



Until your baby's card arrives in the mail (within about 10 days) the mom's card can be used for the baby's visits, for the month of birth and one month afterward.

If you have any questions or need more information, please call:
The Health Consumer Center of Los Angeles (800) 896-3203
or Maternal and Child Health Access (213) 749-4261.



Maternal and Child Health Access (213) 749-4261 www.mchaccess.org

10-24-07

Pregnant woman flyer